

A.K

ИЧАБ.А 23





# Forms in Motion



X

**Ihab Ahmad**





# Preface

Kreative Call, a leading advocate for inclusive art, is thrilled to announce the opening of its upcoming groundbreaking exhibition, « Forms in Motion: A Collaborative Art Exhibition Bridging Worlds.» This remarkable showcase brings together the talent of renowned international artist Ihab Ahmad alongside a community of artists with special needs and social challenges, resulting in a collection that is both visually stunning and emotionally profound.

The exhibition celebrates the power of collaboration and aims to challenge traditional notions of artistry, perception, and creativity. Through this unique partnership, the artists have joined forces to create a vibrant and lively collection of 30 paintings and 9 sculptures that transcend boundaries and open new doors of understanding.

Ihab Ahmad renowned for his vibrant and lively works have collaborated with artists with Autism, artists with Social Challenges and artists with Behavior Disorder bringing together different perspectives and artistic techniques. The paintings, bursting with color and energy, reflect the diverse experiences and rich imaginations of the artists involved. Each stroke and brushwork represents a profound expression of emotions, capturing the essence of their shared journey.

In addition to the captivating paintings, the exhibition features an extraordinary display of sculptures created by visually-impaired artists. Guided by their unique sensory perceptions and tactile sensitivity, these artists have meticulously crafted sculptures that invite viewers to experience art beyond the visual realm. The sculptures serve as a testament to the boundless creativity and resilience of the human spirit, offering a new way to engage with art through touch and exploration.

«Forms in Motion» is a testament to the transformative power of collaboration and the ability of art to transcend barriers.

By merging the talent of renowned artist Ihab Ahmad with the unique perspectives of artists with special needs and with social challenges, this exhibition invites viewers to challenge their preconceptions and embrace the beauty of diversity in the artistic realm.

We invite you to experience and witness the extraordinary results of this collaborative effort, engaging with art that is not only visually captivating but also emotionally resonant and to celebrate the remarkable achievements of these talented artists.

**Aline Karam**  
**Founder & Director**  
**Kreative Call**



01

Paul Kurdian  
*Artist with behavior disorder*

The Queen  
Acrylic on canvas  
60 x 40 cm



02

Sary Salloum  
*Artist with behavior disorder*

Circus  
Acrylic on canvas  
60 x 40 cm





03

Lara El Hussein  
*Artist with behavior disorder*

The King  
Acrylic on canvas  
60 x 40 cm



04

Paul Kurdian  
*Artist with behavior disorder*

The Spare  
Acrylic on canvas  
60 x 40 cm





05

Christian Nazarian  
*Artist with behavior disorder*

Splash  
Acrylic on canvas  
60 x 40 cm



06

Paul Kurdian  
*Artist with behavior disorder*

Fisherman's Life  
Acrylic on canvas  
40 x 60 cm



07

Christian Nazarian  
*Artist with behavior disorder*

Kingdom of the Queen  
Acrylic on canvas  
60 x 40 cm



08

Charbel Khoury  
*Artist with Autism*

My Town  
Acrylic on canvas  
40 x 60 cm







09

Sary Salloum  
*Artist with behavior disorder*

Watching Around  
Acrylic on canvas  
40 x 60 cm



10

Lara El Hussein  
*Artist with behavior disorder*

Beirut  
Acrylic on canvas  
40 x 60 cm





11

Jawad Matar  
*Artist with Autism*

Purple Bright  
Acrylic on canvas  
60 x 60 cm



12

Sary Salloum  
*Artist with behavior disorder*

Puzzled Life  
Acrylic on canvas  
60 x 60 cm





13

Jawad Matar  
*Artist with Autism*

King's Best Advisor, 2023  
Acrylic on canvas  
60 x 60 cm



14

Nicole Jarjoura  
*Artist with Social Challenges*

Sweet Thoughts, 2023  
Acrylic on canvas  
60 x 60 cm





15

Liliane Lahibi  
*Artist with Social Challenges*

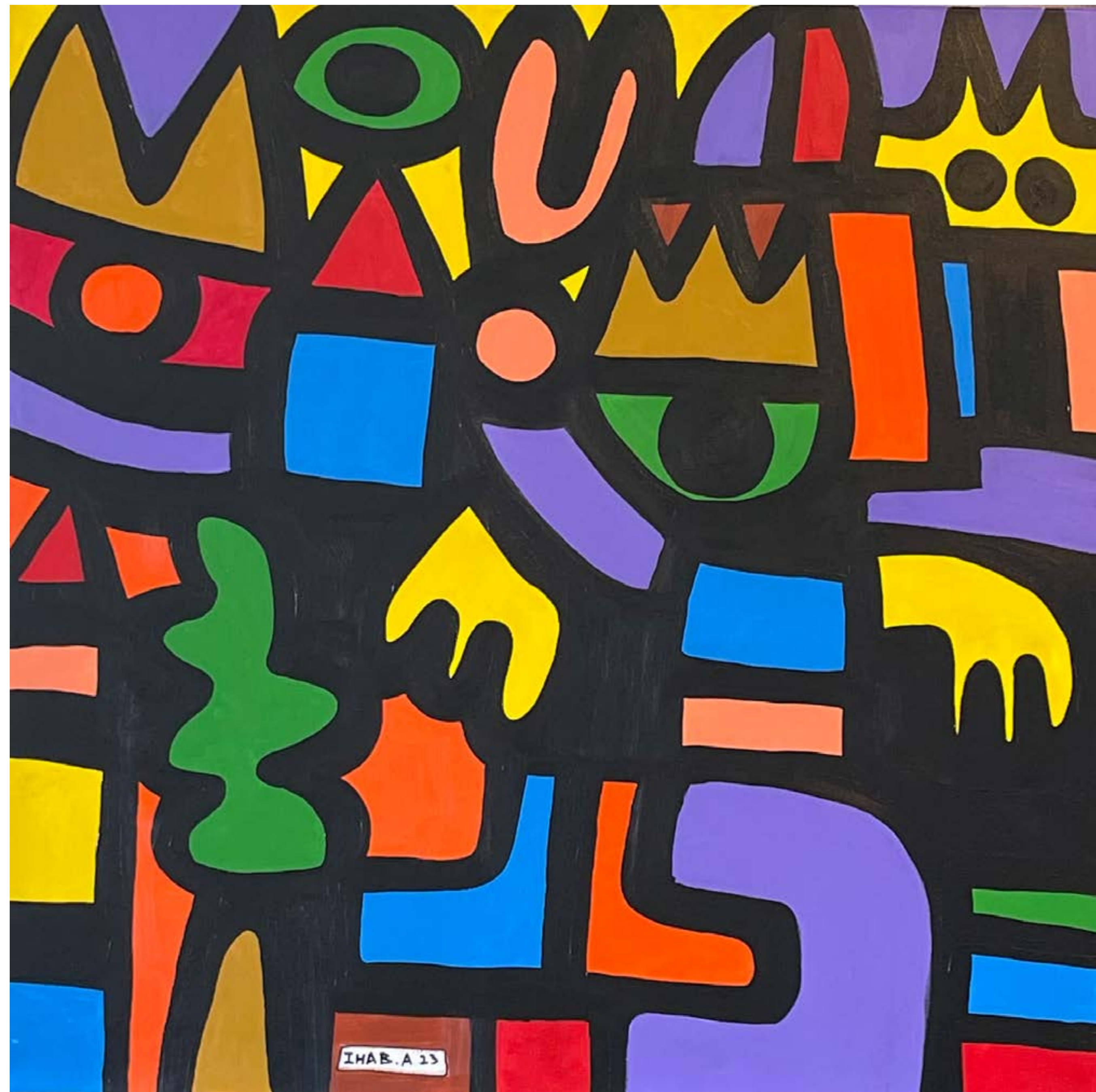
Princess in Red, 2023  
Acrylic on canvas  
60 x 60 cm



---

Liliane Lahibi  
*Artist with Social Challenges*

Power Game, 2023  
Acrylic on canvas  
100 x 100 cm





17

---

Sary Salloum  
*Artist with Behavior disorder*

Sweet Dreams, 2023  
Acrylic on canvas  
80 x 100 cm







18

---

Charbel Khoury  
*Artist with Autism*

Vibrant Life, 2023  
Acrylic on canvas  
100 x 100 cm







20

---

Charbel Khoury  
*Artist with Autism*

King's dreams, 2023  
Acrylic on canvas  
100 x 100 cm







21

Kinan Lahibi  
*Artist with Social Challenges*

Contemplation, 2023  
Acrylic on canvas  
100 x 100 cm



22

Paul Kurdian  
*Artist with Behavior Disorder*

Melting Pot, 2023  
Acrylic on canvas  
80 x 100 cm





23

---

Kinan Lahibi  
*Artist with Socila Challenges*

Sunny Day, 2023  
Acrylic on canvas  
60 x 60 cm



---

Charbel Khoury  
*Artist with Autism*

Life Evolution, 2023  
Acrylic on canvas  
100 x 100 cm







25

Nicole Jarjoura  
*Artist with Social Challenges*

Crowded Day, 2023  
Acrylic on canvas  
100 x 100 cm



26

Charbel Khoury  
*Artist with Autism*

Joyful Thoughts, 2023  
Acrylic on canvas  
60 x 60 cm





27

---

Charbel Khoury  
*Artist with Autism*

Free Connexion, 2023  
Acrylic on canvas  
100 x 80 cm



28

Jawad Matar  
*Artist with Autism*

My Daily Life, 2023  
Acrylic on canvas  
80 x 100 cm







29

Shahe Kendirjian  
*Artist with Behavior Disorder*

King's Garden, 2023  
Acrylic on canvas  
60 x 60 cm

30

Christian Nazarian  
*Artist with Behavior Disorder*

Our Life, 2023  
Acrylic on canvas  
60 x 60 cm







31

---

Souad Youssef  
*Visual impaired artist*

At the Opera  
Resin  
Unique piece  
41 x 21 x 20 cm



32

---

Souad Youssef  
*Visual impaired artist*

Au Moulin Rouge  
Resin  
Unique piece  
41 x 21 x 20 cm





33

Mohamad Hammoud  
*Visual impaired artist*

Welcoming the Spring  
Resin  
Unique piece  
26 x 25 x 15 cm



34

Mohamad Hammoud  
*Visual impaired artist*

Sheltering for Winter  
Resin  
Unique piece  
26 x 25 x 15 cm





35

Salim Sleiman  
*Visual impaired artist*

Peaceful Reading  
Resin  
Unique piece  
15 x 32 x 15 cm



36

Salim Sleiman  
*Visual impaired artist*

Power Nap  
Resin  
Unique piece  
15 x 32 x 15 cm





37

Salim Sleiman  
*Visual impaired artist*

Follow your Star  
Resin  
Unique piece  
38 x 20 x 18 cm

38

Salim Sleiman  
*Visual impaired artist*

The Heir  
Resin  
Unique piece  
38 x 20 x 18 cm





39

---

Souad Youssef  
*Visual impaired artist*

Queen on her Throne  
Resin  
Unique piece  
23 x 23 x 12 cm

