

# Beyond Colors

JULY 27, 2023  
Rebirth Beirut - Gemmayzeh



# *Preface*

Step into a world where creativity knows no bounds. We are delighted to present “Beyond Colors,” the third art exhibition dedicated to showcasing the extraordinary talents of artists with special needs.

We have curated an enchanting collaborative collection that celebrates the unique perspectives and artistic expressions of visually impaired sculptors under the supervision and direction of Carole Ingea with the renowned artists Zeina Nader and Ouisam Melhem.

“Beyond Colors” is also a celebration of the limitless imagination and artistic abilities of individuals with Social Challenges, Behavior Disorder and Autism. Through their remarkable paintings, these artists transcend barriers and invite us to see the world through their world. Each brushstroke and every stroke of a pencil tell stories of resilience, passion, and a profound connection to the world around them. “Beyond Colors” is a testament to the power of art to communicate, inspire, and bring communities together.

This collaboration started when Optique & Vision, a dear supporter to our cause and a true believer in inclusivity and in the transformative power of art, wanted to celebrate its 75th anniversary while offering a platform to our gifted Artists to celebrate ‘Life’ beyond colors ...

Together, we aim to challenge preconceived notions and create an environment where all individuals can thrive while fostering a greater sense of inclusivity and promoting the importance of diversity within the community.

Kreative Call is the first social entrepreneurship platform in the MENA region that embarks on an artistic journey with a community of gifted Artists with Special Needs and Social Challenges, offering them a space to express their emotions and unveil their creativity while getting them a step closer to social and economic inclusion as humans and artists in society.

Join us as we celebrate the talent, creativity, and resilience of special needs artists. This exhibition promises to be a transformative experience that challenges perceptions and inspires a more inclusive and accepting society.

*Aline Karam*  
*Founder of Kreative Call*

*Mohamad Hammoud X Zeina Nader*



**Mohamad Hammoud X Zeina Nader**

*Visual Impaired Artist*

La Romantique  
Painted resin and acrylic  
Unique piece  
12 x 25 x 12 cm

USD 750



**Mohamad Hammoud X Zeina Nader**

*Visual Impaired Artist*

La Jalouse  
Painted resin and acrylic  
Unique piece  
12 x 25 x 12 cm

USD 750

*Salim Souleiman X Ouisam Melhem*



**Salim Souleiman X Ouisam Melhem**

*Visual Impaired Artist*

Melodies of the Soul  
Painted resin and metal  
Unique piece  
45 x 15 x 15 cm

USD 750

**Salim Souleiman X Ouisam Melhem**

*Visual Impaired Artist*

The Enigma's Embrace  
Painted resin and metal  
Unique piece  
40 x 25 x 12 cm

USD 750

*Salim Souleiman X Ouisam Melhem*



**Salim Souleiman X Ouisam Melhem**

*Visual Impaired Artist*

Serenade of Silent Reflections I

Painted resin and metal

Unique piece

41 x 25 x 12 cm

USD 750



**Salim Souleiman X Ouisam Melhem**

*Visual Impaired Artist*

Serenade of Silent Reflections II

Painted resin and metal

Unique piece

41 x 25 x 12 cm

USD 750

*Visual Impaired Artist worked under the supervision of the renowned sculptor Carole Ingea*

*Mohamad Hammoud X Ouisam Melhem*



**Mohamad Hammoud X Ouisam Melhem**  
*Visual Impaired Artist*

Choreography of Conceptions  
Painted resin and metal  
Unique piece  
33 x 25 x 12 cm

USD 750

*Visual Impaired Artist worked under the supervision of the renowned sculptor Carole Ingea*



**Sary Salloum**  
*Artist with Behavior Disorder*

Enchanted Bird  
60 x 40 cm

USD 150

**Christian Nazarian**  
*Artist with Behavior Disorder*

Flower Picker  
60 x 40 cm

USD 150

**Shahe Kendirjian**  
*Artist with Behavior Disorder*

Lion King  
60 x 40 cm

USD 150



**Shahe Kendirjian**  
*Artist with Behavior Disorder*

The Pelican  
60 x 40 cm

USD 150



**Paul Kurdian**  
*Artist with Behavior Disorder*

Le Rossignol  
60 x 40 cm

USD 150



**Christian Nazarian**  
*Artist with Behavior Disorder*

Majestic Eagle  
60 x 40 cm

USD 150



**Lara El Hussein**  
*Artist with Behavior Disorder*

Tenderness  
60 x 40 cm

USD 150



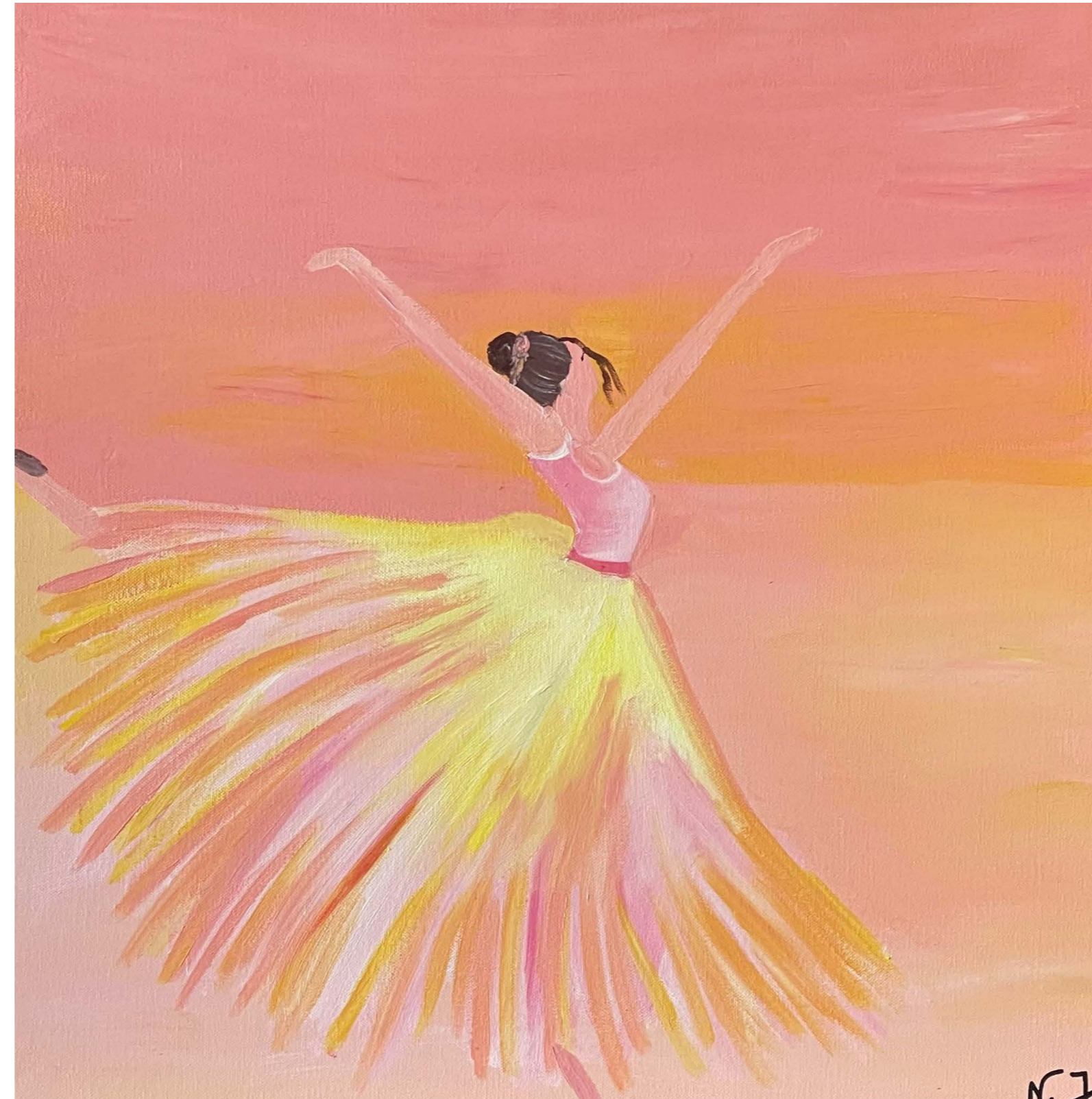


**Kinan Lahibi**

*Artist with Social Challenges*

Autumn Leaves  
60 x 60 cm

USD 200



**Nicole Jarjoura**

*Artist with Social Challenges*

Ballerina  
60 x 60 cm

USD 200



**Charbel Khoury**  
*Artist with Autism*

Dancing Ballerina  
100 x 100 cm

USD 650



**Kinan Lahibi**

*Artist with Social Challenges*

Femme à Tresse  
60 x 60 cm

USD 200



**Kinan Lahibi**

*Artist with Social Challenges*

Blue Hat Lady  
60 x 60 cm

USD 200



**Christian Nazarian**  
*Artist with Behavior Disorder*

Sea Turtles  
60 x 60 cm

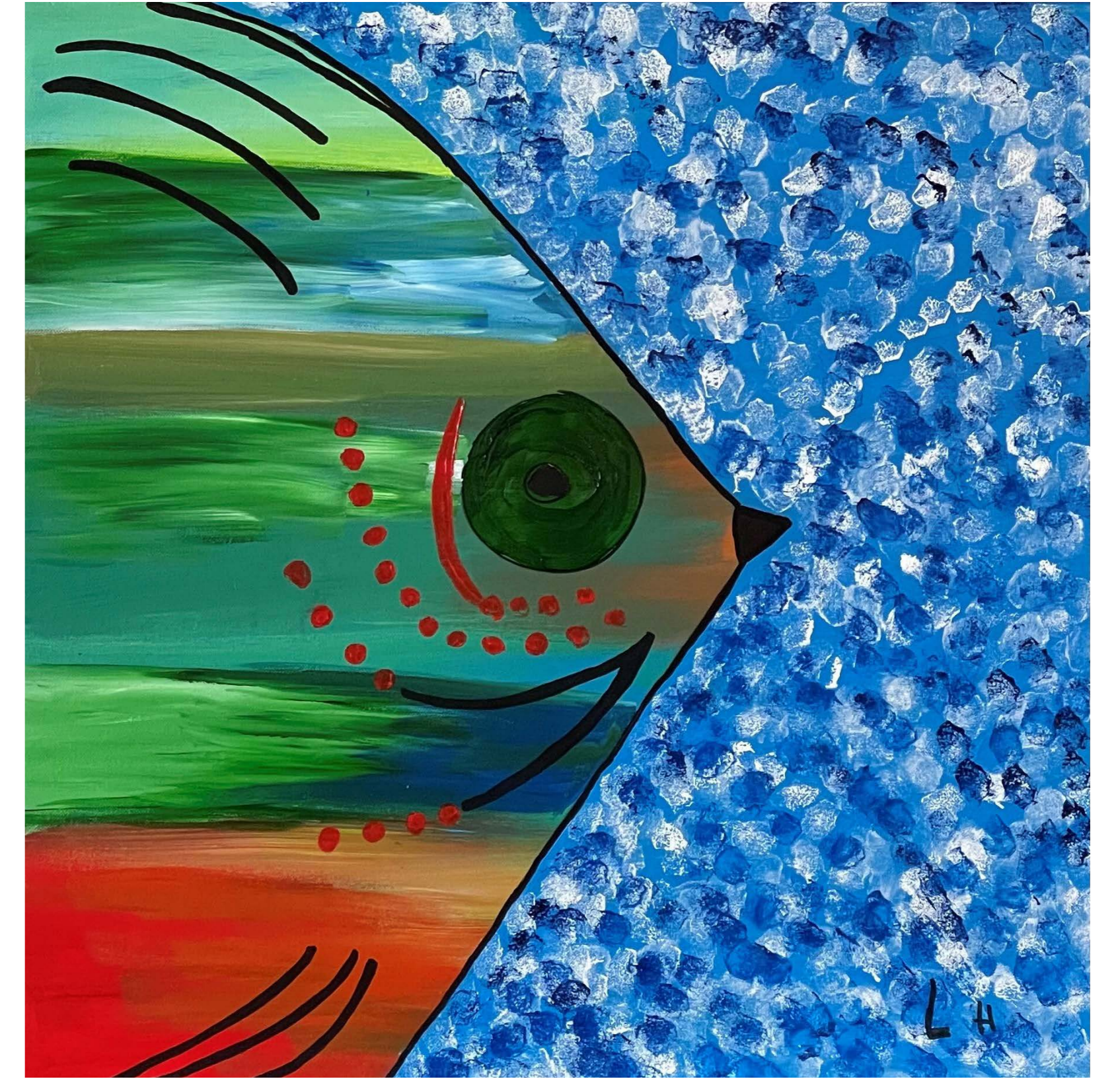
USD 200



**Sary Salloum**  
*Artist with Behavior Disorder*

Les Trois Voiliers  
60 x 60 cm

USD 200



**Liliane Lahibi**  
*Artist with Social Challenges*

Balloon Fish  
60 x 60 cm

USD 200



**Liliane Lahibi**  
*Artist with Social Challenges*

Lady in Blue  
60 x 60 cm

USD 200



**Paul Kurdian**  
*Artist with Behavior Disorder*

Honey B  
60 x 60 cm

USD 200



**Liliane Lahibi**  
*Artist with Social Challenges*

Glowing Spring  
100 x 80 cm

USD 550

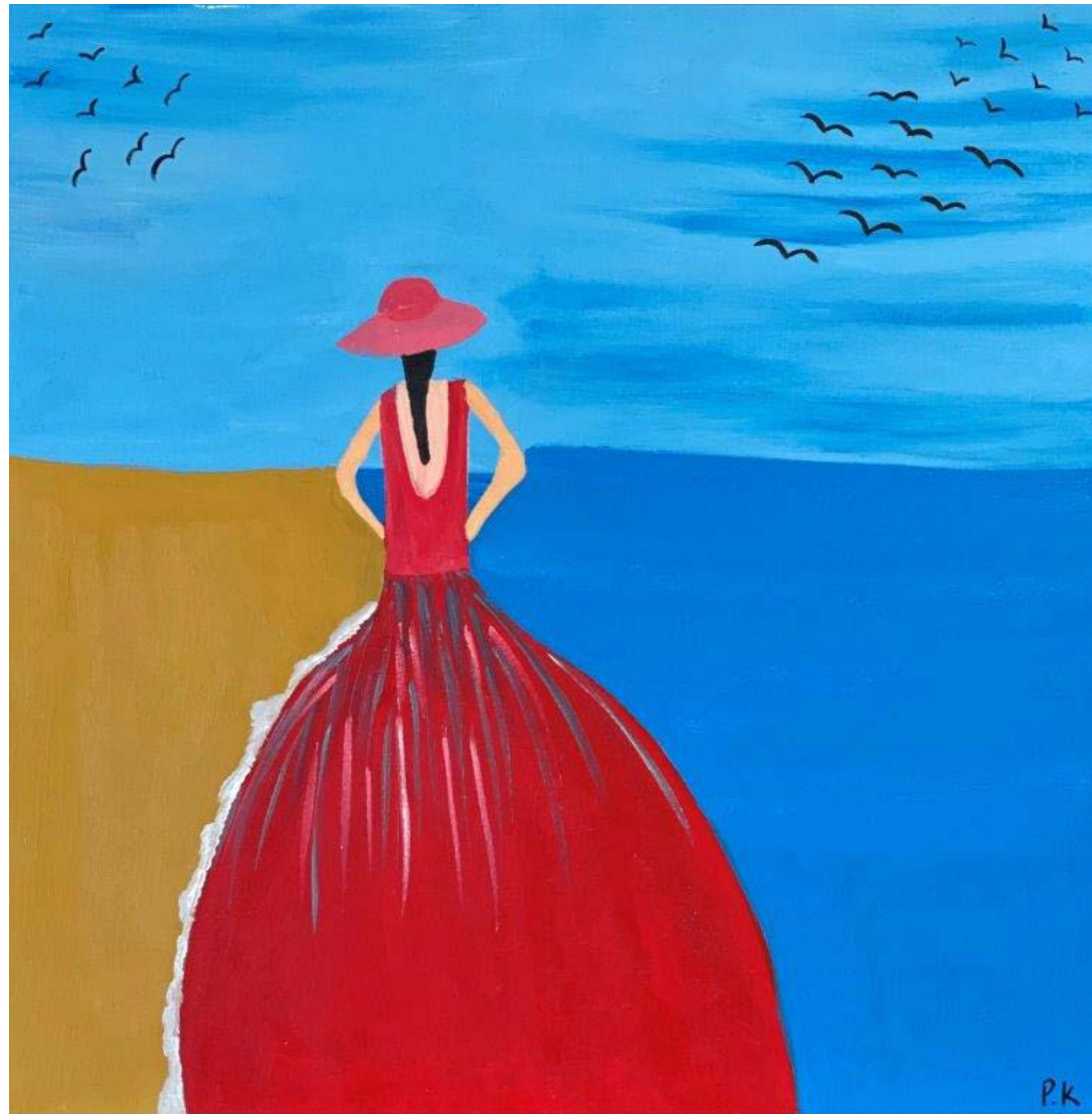


**Shahe Kendirjian**

*Artist with Behavior Disorder*

Promenade dans un Verger  
100 x 100 cm

USD 650



**Paul Kurdian**  
*Artist with Behavior Disorder*

Blue Energy  
100 x 100 cm

USD 650



**Lara El Hussein**  
*Artist with Behavior Disorder*

Boat Trip  
100 x 100 cm

USD 650





**Kinan Lahibi**  
*Artist with Social Challenges*

Resting Horses  
100 x 100 cm

USD 650